

اعلام برنده مسابقه بین المللی معماری ترمینال مسافری جدید شهر فرودگاهی امام خمینی(ره)

به گزارش پایگاه خبری وزارت راه و شهر سازی به نقل از پایگاه خبری شرکت شهر فرودگاهی امام خمینی(ره) صبح امروز ۱۶ تیرماه ۱۳۹۸ برنده مسابقه معماری ترمینال جدید شهر فرودگاهی امام خمینی(ره) با حضور مدیرعامل و رییس هیات مدیره، اعضای هیات مدیره، معاونین، داوران پروژه و مشاور ناکو + ۳ تی اعلام شد.

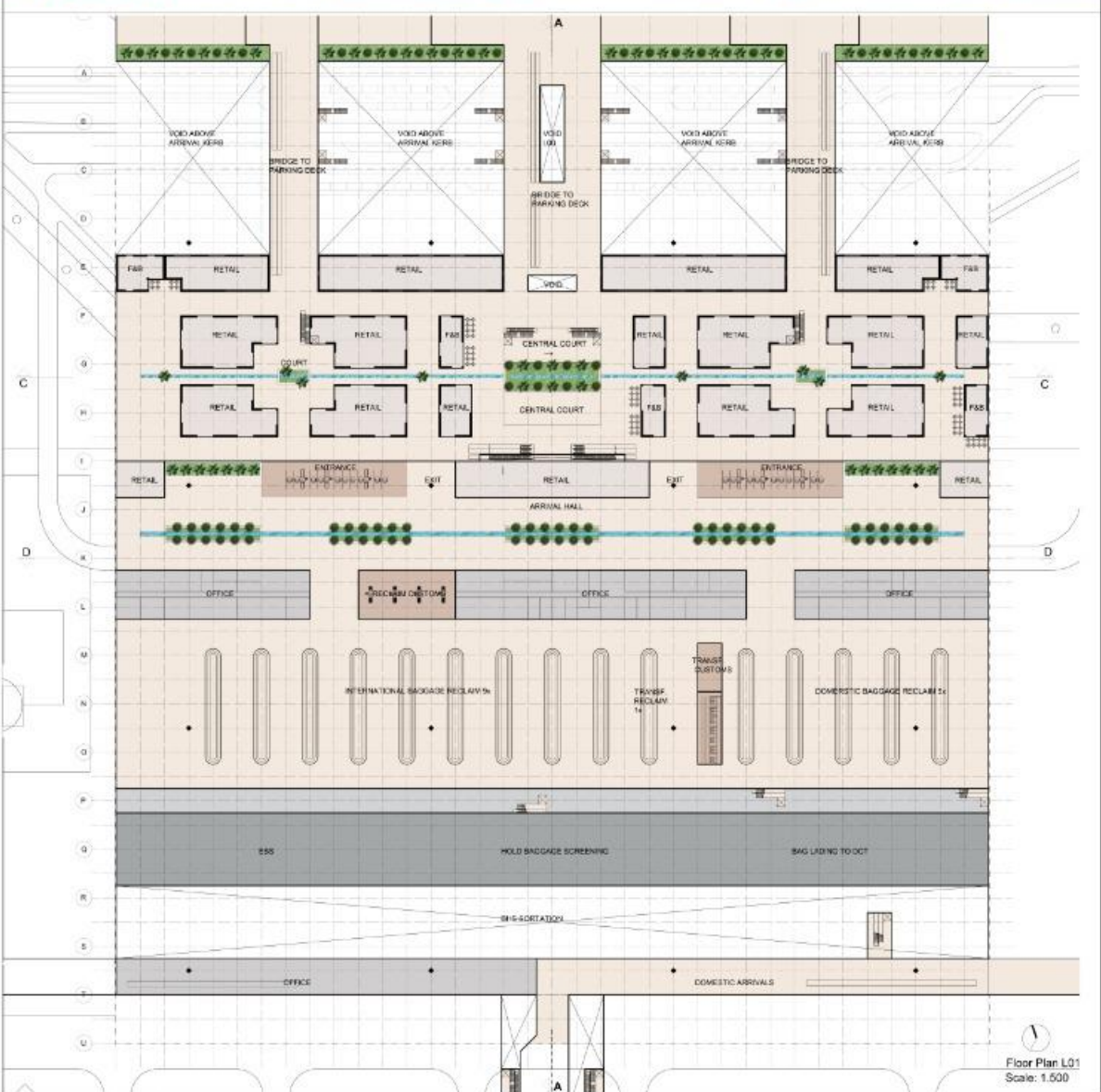
در بین چندین شرکت کننده مسابقه معماری این ترمینال، شرکت های GMP از کشور آلمان با مشاور ایرانی ره شهر، Hadi Tehrani از کشور آلمان با مشاور ایرانی هسته طراحی بعد چهارم، Kincl از کشور کرواسی با مشاور ایرانی بن سار به ترتیب مقام اول تا سوم را کسب کردند.

گفتنی است ترمینال جدید شهر فرودگاهی بر اساس طرح جامع توسعه شهر فرودگاهی با مساحت بیش از ۶۵۵ هزار متر مربع و با ظرفیت اعزام و پذیرش بیش از ۱۰۰ میلیون مسافر(در فاز نهایی ساخت این ترمینال) بر اساس مقررات نوین (جدا سازی مسافری بین المللی و داخلی و جدا سازی مسافری ورودی و خروجی) با استفاده از هنر اسلامی - ایرانی احداث خواهد شد.





View From Arrival Hall (L01)



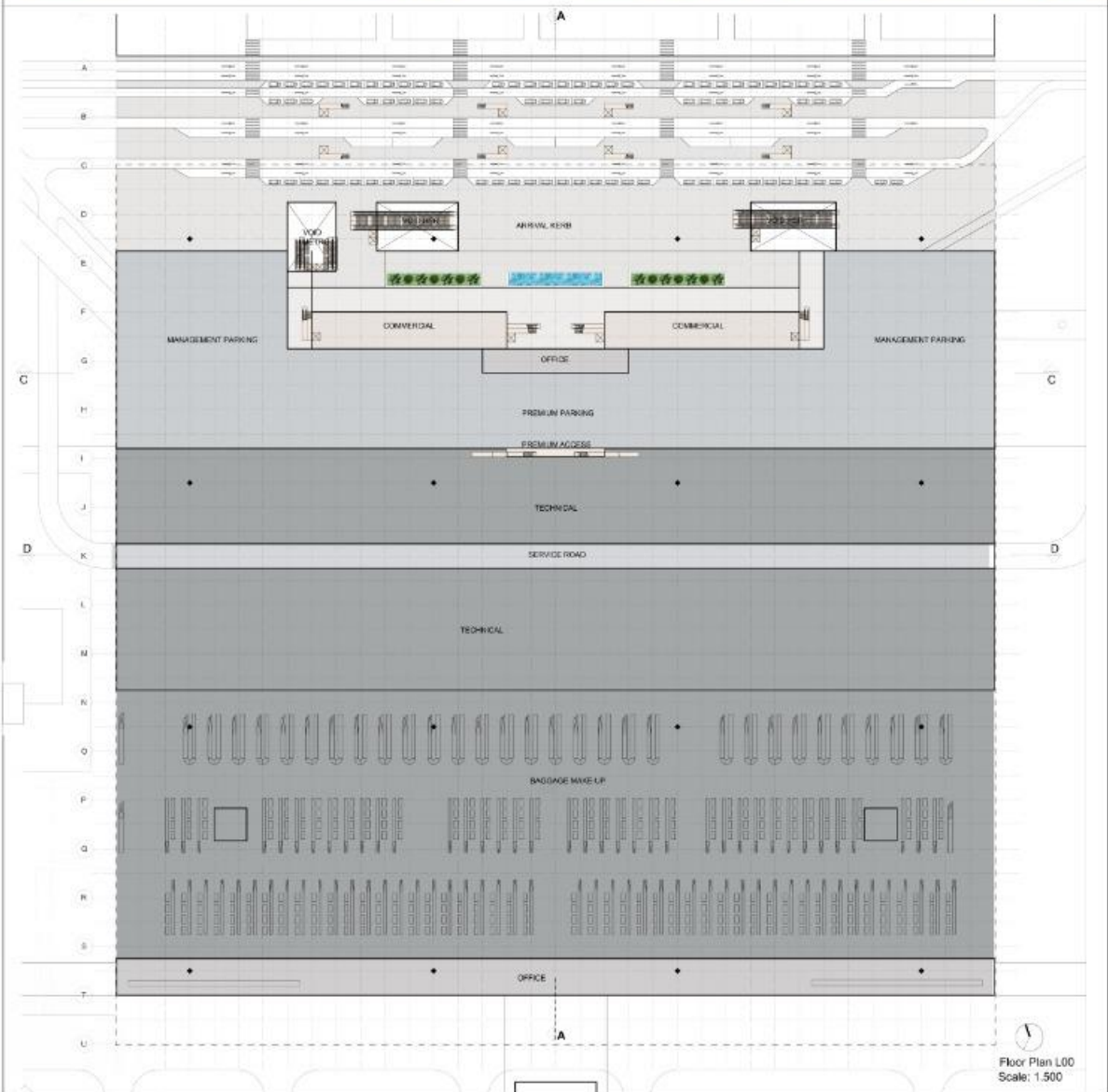
Floor Plan L01
Scale: 1:500



View of Landscape Facade from Arrival Kerb (L00)



View from Parking Bridge (L01)



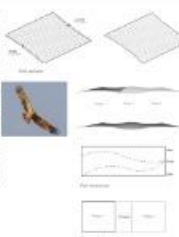
Floor Plan L00
Scale: 1:500



Bird's-eye view Terminal (final phase)

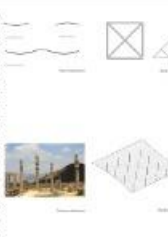
Vision, Inspiration and Concept

The vision of the terminal is to be a modern, efficient and comfortable place for passengers. The design is based on the concept of a 'terminal as a city'. The terminal is designed to be a place where passengers can spend their time comfortably, waiting for their flight. The terminal is designed to be a place where passengers can spend their time comfortably, waiting for their flight. The terminal is designed to be a place where passengers can spend their time comfortably, waiting for their flight.



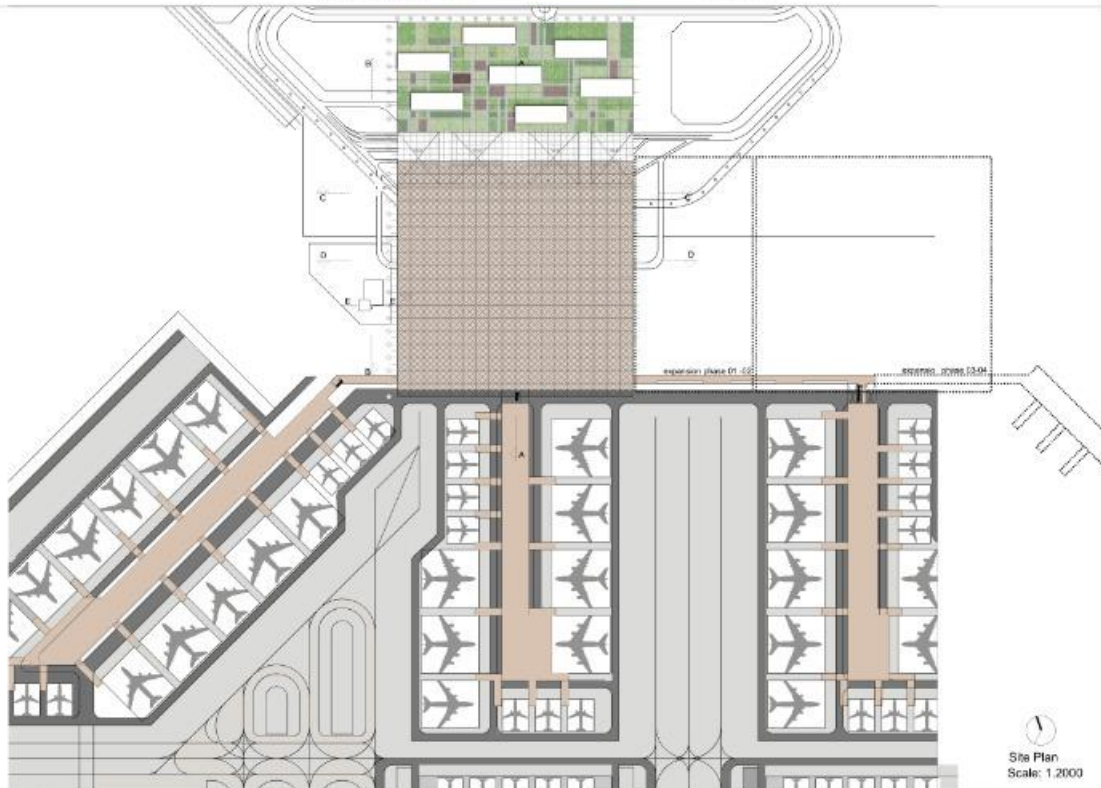
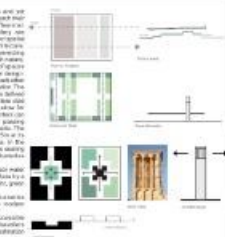
Roof

The roof is a key architectural element which defines the top of the terminal. The roof is designed to be a place where passengers can spend their time comfortably, waiting for their flight. The roof is designed to be a place where passengers can spend their time comfortably, waiting for their flight. The roof is designed to be a place where passengers can spend their time comfortably, waiting for their flight.



Internal spaces

The internal spaces are designed to be a place where passengers can spend their time comfortably, waiting for their flight. The internal spaces are designed to be a place where passengers can spend their time comfortably, waiting for their flight. The internal spaces are designed to be a place where passengers can spend their time comfortably, waiting for their flight.



Site Plan Scale: 1:2000



13 D26L

IranShahr International Terminal



Night bird's-eye view Terminal (Phase 01)



Night bird's-eye view Terminal (Final Phase)



IranShahr Terminal Architectural Vision Competition of IKAC





View from Departure Hall

Usability - operations and logistics

The terminal is designed to be a highly efficient and safe space for passengers. It features a clear and intuitive wayfinding system, with signage and floor markings that guide passengers through the terminal. The design also incorporates a variety of seating options, including benches and lounge areas, to provide a comfortable and relaxing environment for travelers. The terminal is also designed to be highly accessible, with ramps and elevators that ensure that all passengers can move through the terminal with ease.

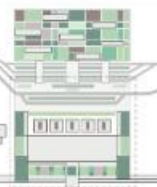
Sustainability

The terminal is designed to be a sustainable and green building. It features a variety of sustainable design elements, including a large green roof, solar panels, and energy-efficient lighting. The terminal is also designed to be highly resilient, with a strong structural frame and a variety of fire safety measures. The terminal is also designed to be highly flexible, with a variety of spaces that can be used for a wide range of activities.



Materialization

The terminal is designed to be a highly durable and long-lasting building. It features a variety of high-quality materials, including stainless steel, aluminum, and glass. The terminal is also designed to be highly resistant to wear and tear, with a variety of protective coatings and finishes. The terminal is also designed to be highly flexible, with a variety of spaces that can be used for a wide range of activities.



Special Features

The terminal is designed to be a highly innovative and cutting-edge building. It features a variety of special features, including a large green roof, solar panels, and energy-efficient lighting. The terminal is also designed to be highly resilient, with a strong structural frame and a variety of fire safety measures. The terminal is also designed to be highly flexible, with a variety of spaces that can be used for a wide range of activities.



View from Chak-In



View from Chak-In



Public viewing terrace



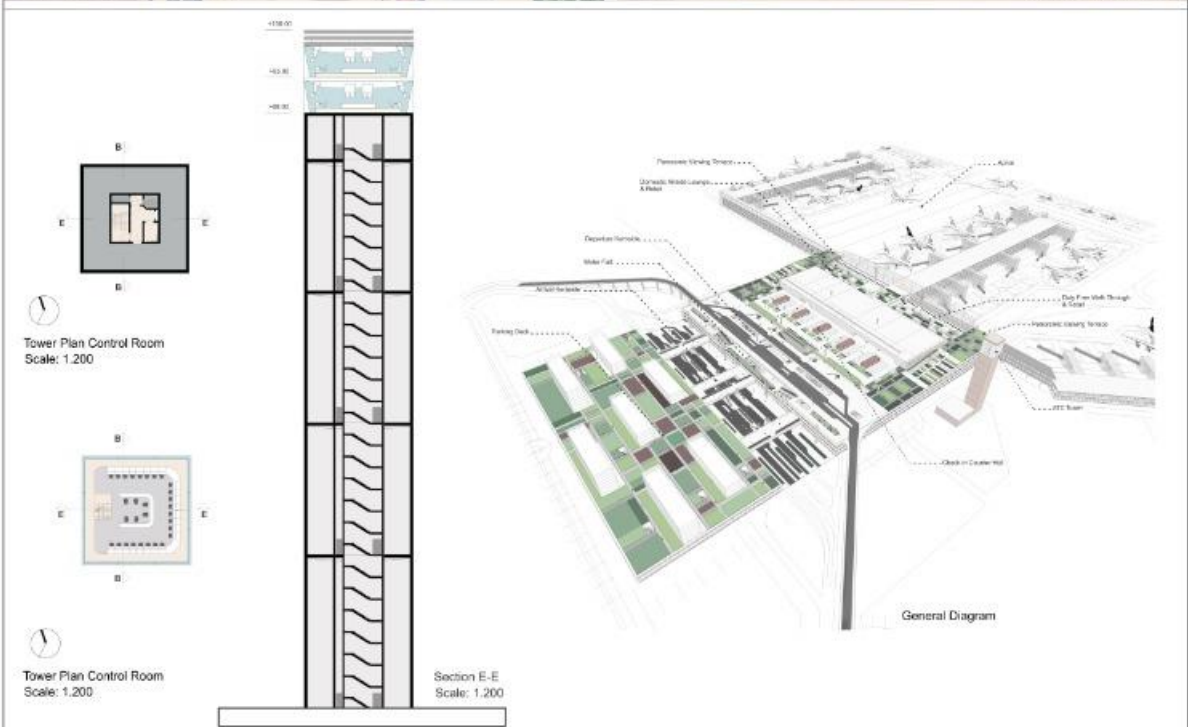
View from Parking Deck(L02)



View from Public Terrace Garden (L03)



View from Arrival Retail (L01)





Bird's-eye view from Airstide Terminal



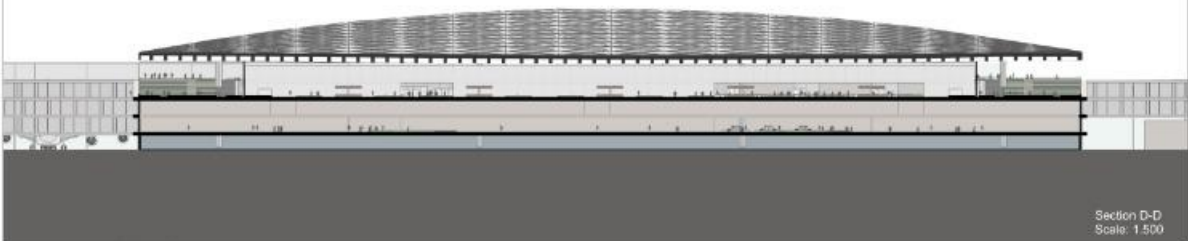
Bird's-eye view from Airstide Terminal (phase 01)



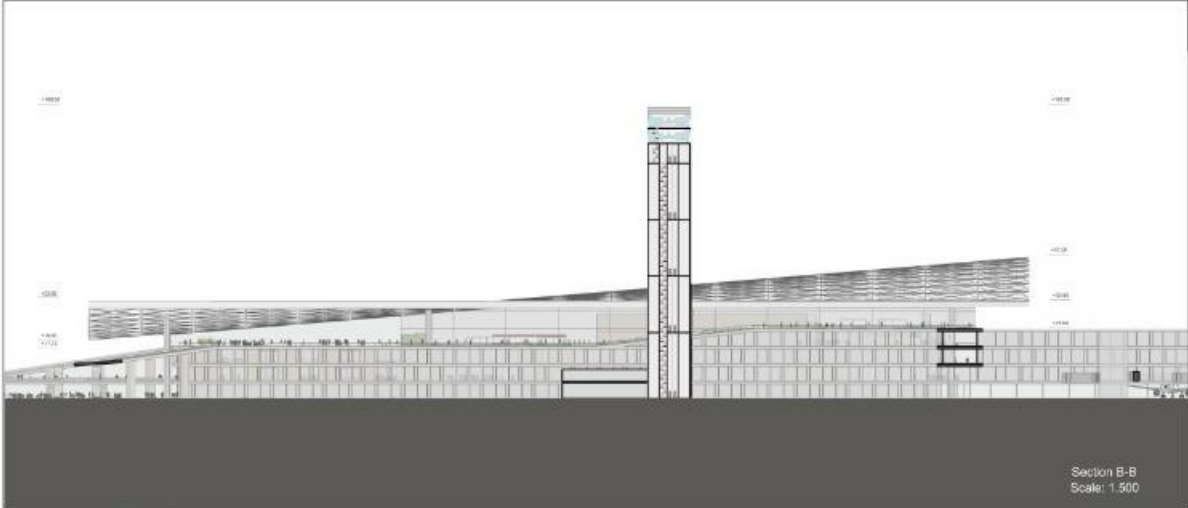
Night view from Airstide Terminal

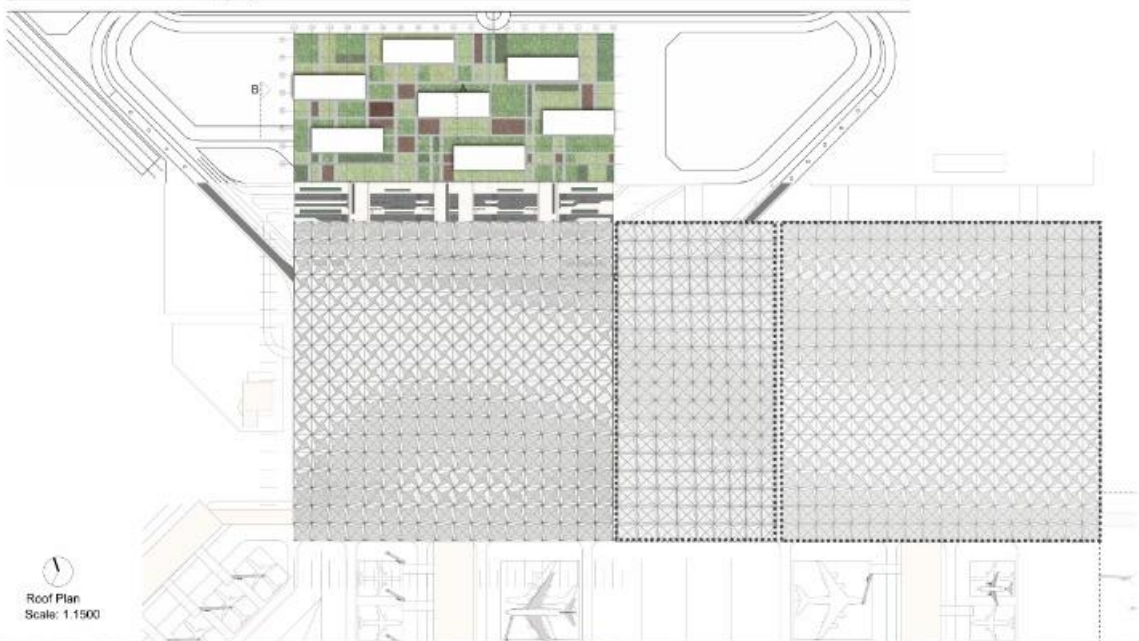


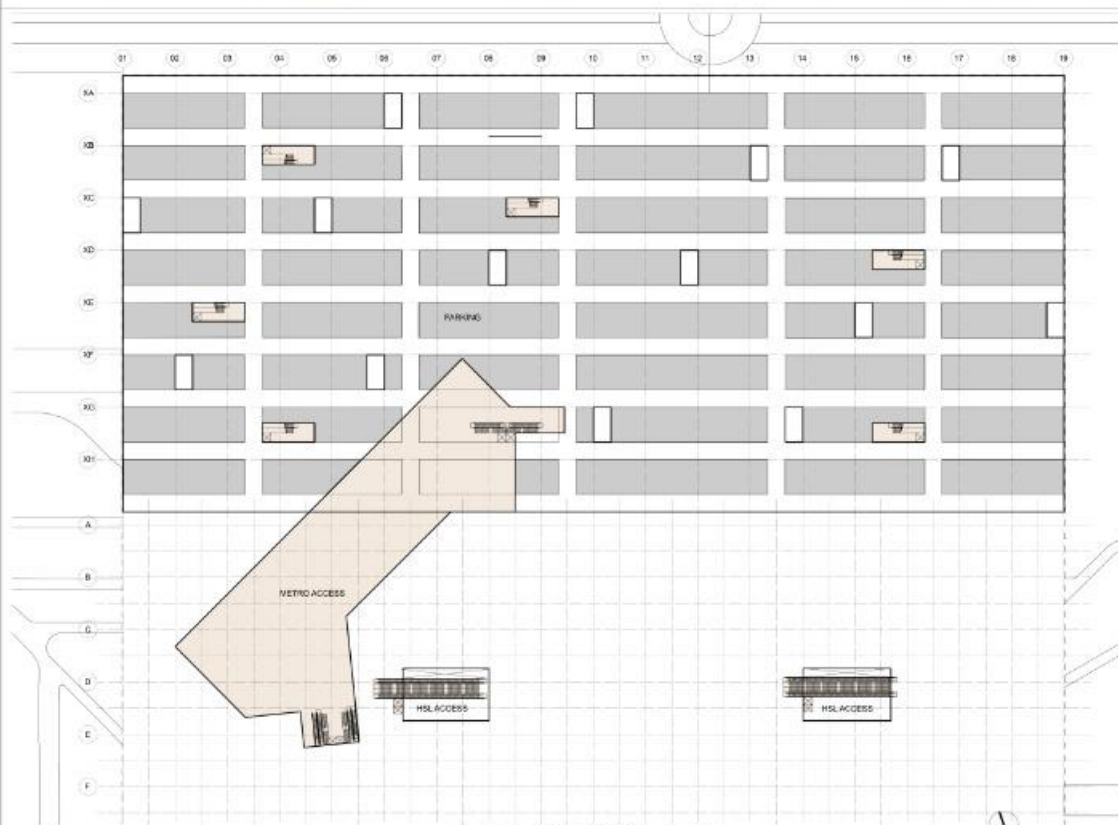
Section C-C
Scale: 1:500



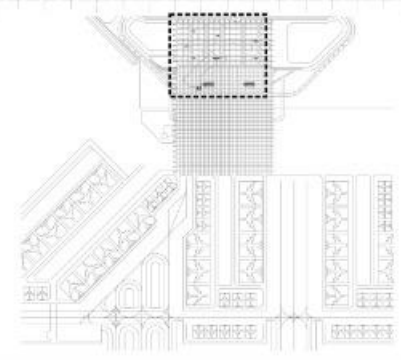
Section D-D
Scale: 1:500





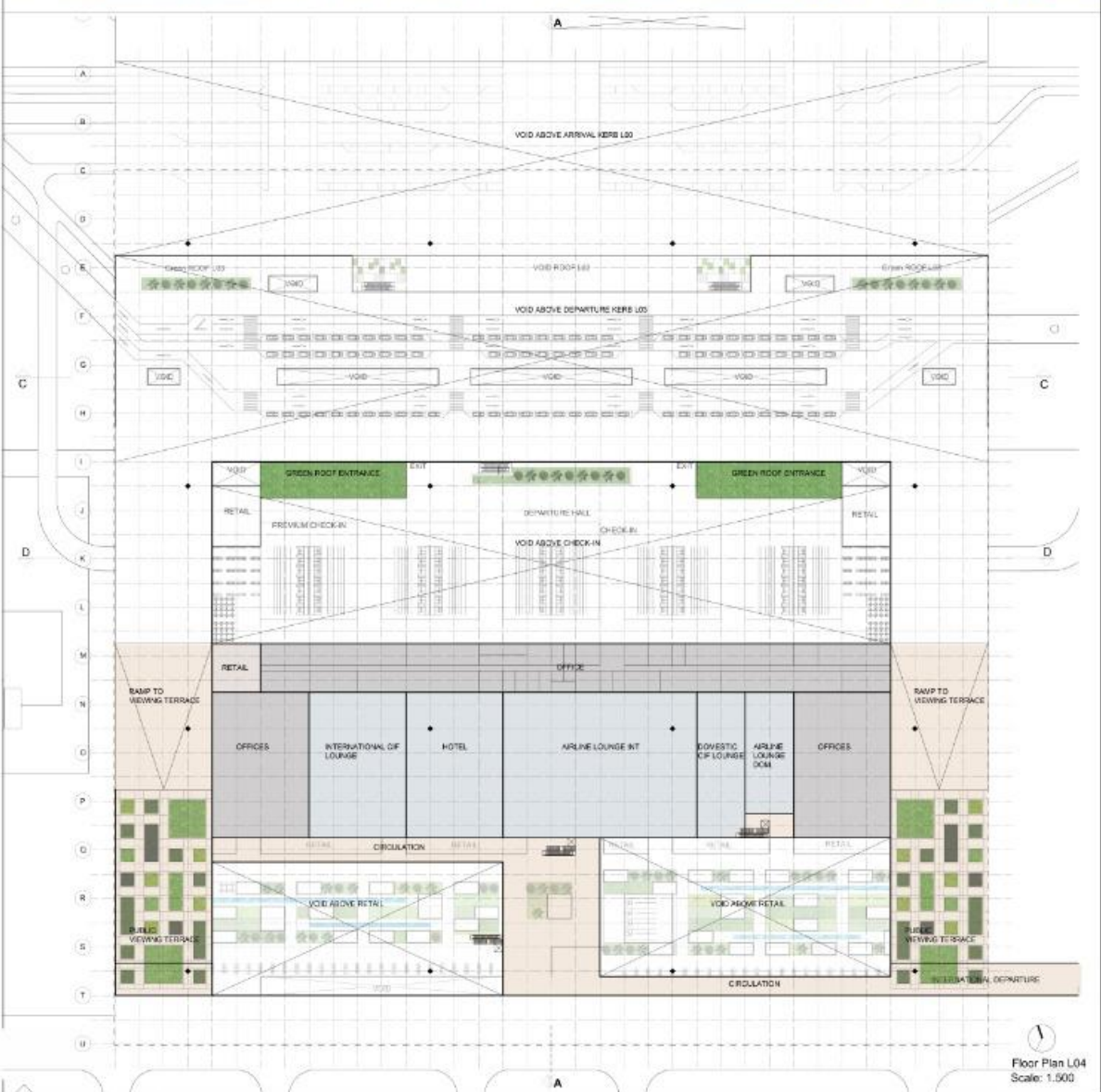


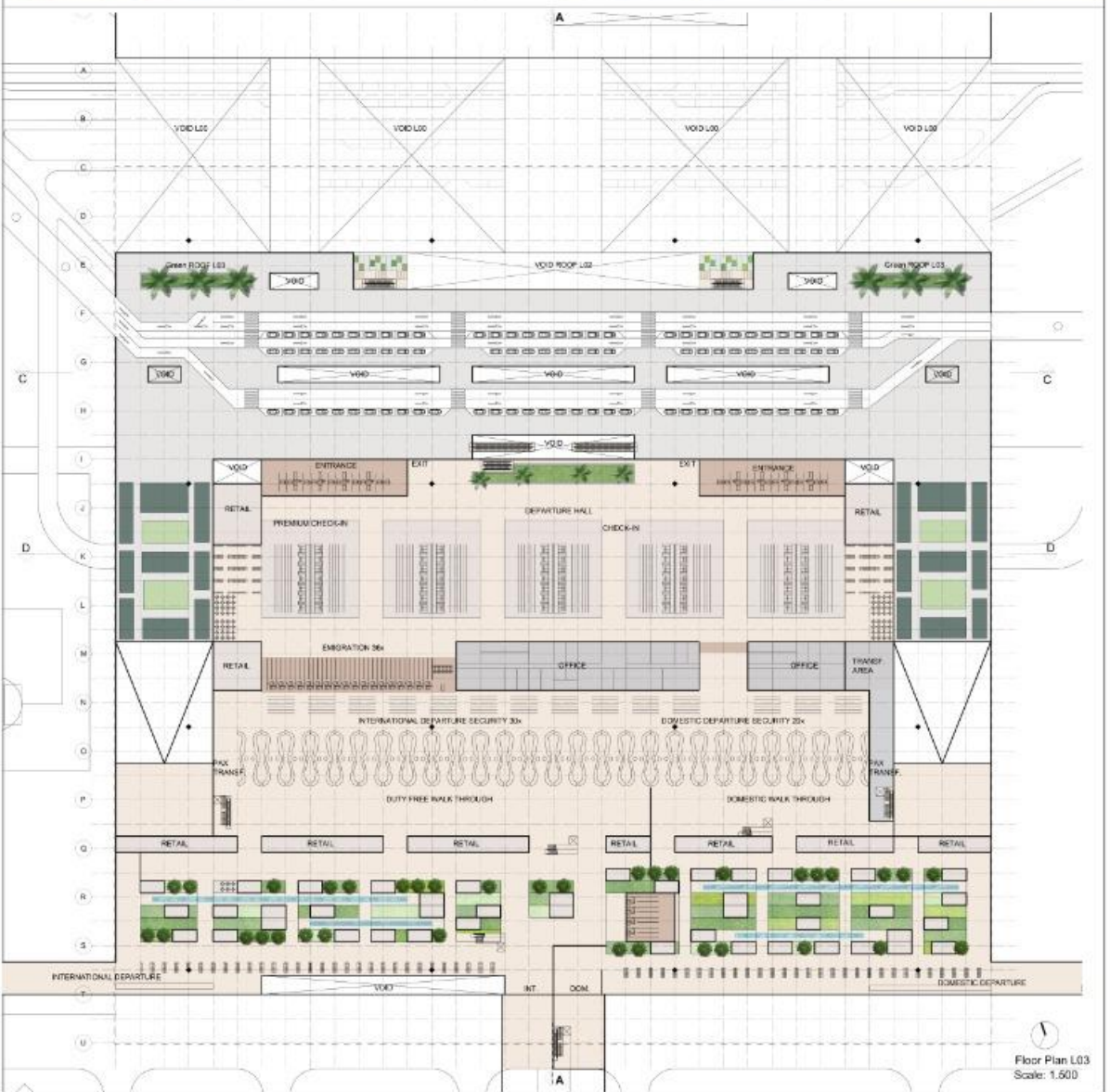
Floor Plan L-01
Scale: 1:500





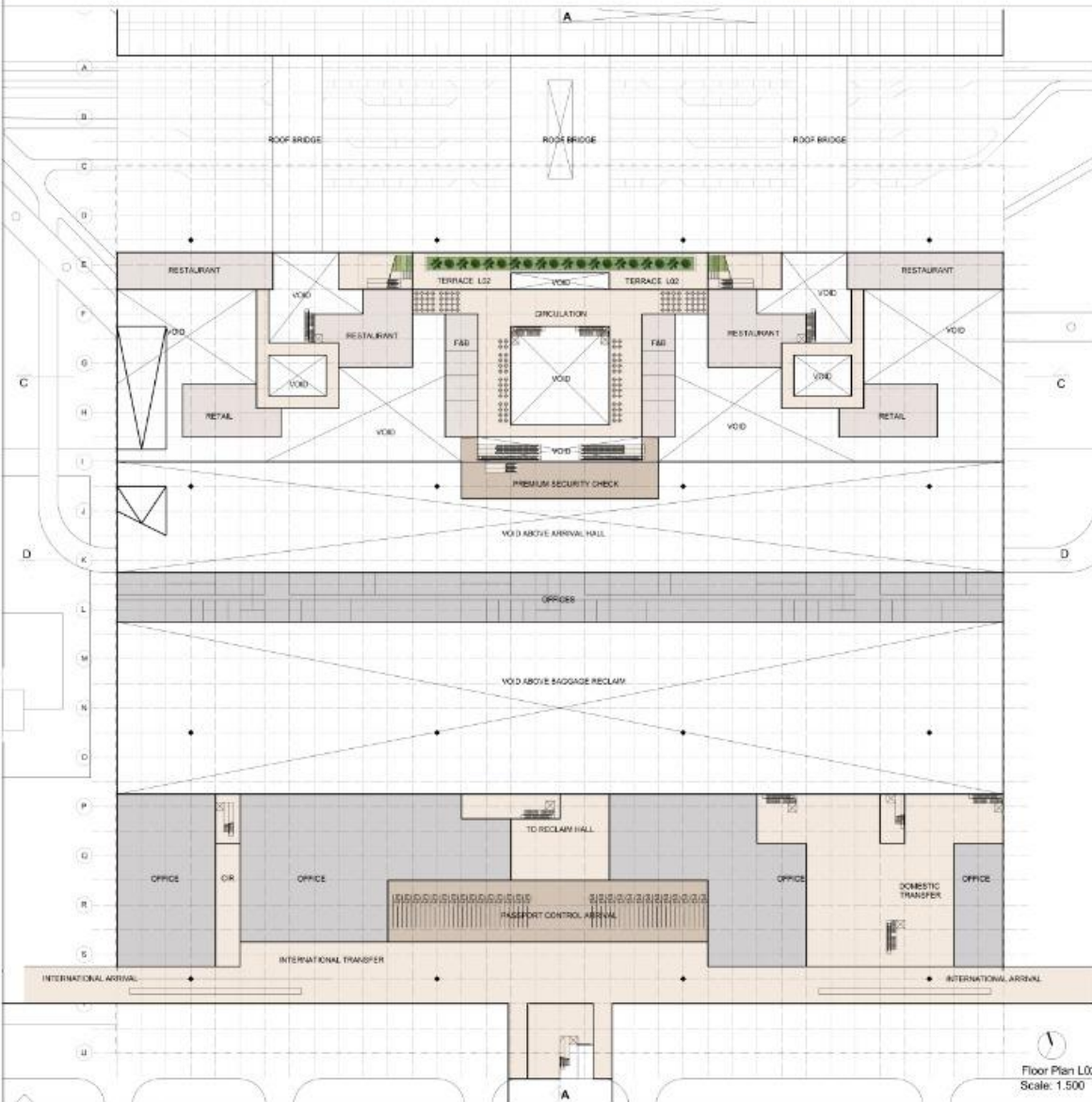
View Departure Lounge from CIP Lounge (L04)







View landside facade from parking bridge (L01)



Floor Plan L02
Scale: 1:500

